

## Paving Jointing Mortar

Convenient and easy to use jointing mortar.

Requires just 2 litres of clean water added to the tub and mixed with a paddle mixer, to be ready to go.

Ease of use makes tufftop Utility ideal for smaller projects including driveways, pavements and patios.

tufftop Utility has been developed to make things as easy as possible for all users. Supplied in a reusable and recyclable tub.

The individual sachets in each tub ensure the correct amount of tufftop Utility is mixed and wastage is minimised.

The carefully measured contents of each sachet are mixed with exactly 1 litre of water.

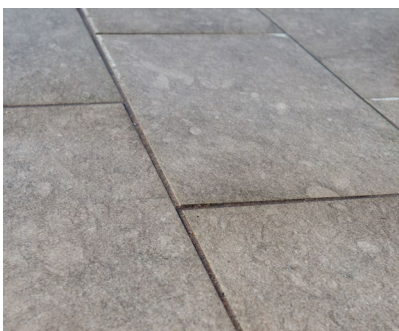
Paving unit size	Joint width	m <sup>2</sup> per (11kg) tub
600 x 900 x 22 mm	8 mm	12.2 m <sup>2</sup>
400 x 800 x 22 mm	8 mm	9.2 m <sup>2</sup>
300 x 600 x 22 mm	8 mm	7.3 m <sup>2</sup>
600 x 900 x 30 mm	10 mm	7.3 m <sup>2</sup>
600 x 600 x 30 mm	10 mm	6.1 m <sup>2</sup>
300 x 600 x 30 mm	10 mm	4.2 m <sup>2</sup>
450 x 450 x 32 mm	10 mm	4.4 m <sup>2</sup>
600 x 900 x 50 mm	10 mm	4.6 m <sup>2</sup>
600 x 600 x 50 mm	10 mm	3.8 m <sup>2</sup>
300 x 600 x 50 mm	10 mm	2.6 m <sup>2</sup>
100 x 100 x 100 mm	6 mm	0.55 m <sup>2</sup>

## Technical Specs

Colour	Beige, Natural Grey, Mid Grey & Dark Grey
Packaging	11 kg Tub (2x 5.5 kg Sachets)
Joint width	>4 mm
Typical water used	1 litre per 5.5 kg sachet
Typical coverage	<a href="http://www.steintec.co.uk/calculator/">www.steintec.co.uk/ calculator/</a>
Packages per pallet	36
Pallet quantity	420 kg
Set time	24 hours
Working time	30 min at 20 °C
Working temperature	2-30 °C
Compressive strength (20 °C)	7 days: ~20 N/mm <sup>2</sup>
	28 days: ~25 N/mm <sup>2</sup>
Flexural strength	~3.5 N/mm <sup>2</sup>
Elastic modulus	(20,000 ± 4,000) N/ mm <sup>2</sup>
Adhesive bond	~1.5 N/mm <sup>2</sup>
Storage life	12 months from manufacture date
Compliance	BS 7533



*N.B. colours are indicative only*



**Steintec**<sup>®</sup>  
high performance paving mortars

1 Northwick Rd  
Canvey Island  
Essex  
SS8 0PU  
**+44 203 598 9800**  
[www.steintec.co.uk](http://www.steintec.co.uk)