

**DCX90 7 PIECE CORE DRILL KIT - SLOTTED**

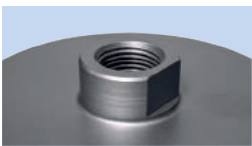
The DCX90 range of dry core drills are ideal for the plumber, builder and general tradesman providing a compact and versatile kit for drilling holes in masonry from 38mm – 117mm.

All items included within the 7 piece case can be purchased individually for restocking of the kit.

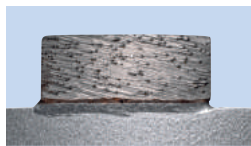
Mexco dry core drills should be used in conjunction with a minimum 850W+ drill motor fitted with a slipping clutch.



High quality slotted & fluted steel barrel for fast waste removal



1/2" BSP back end fitment



High diamond concentration

**PRODUCT OVERVIEW:**

**Grade:** X90

**Segment Height:** 10mm

**Segment Attachment:** Brazed

**Dry/Wet:** Dry

**Segment Type:** Flat Curve

**Barrel Type:** Slotted & Fluted



**LOW WEAR RATE**

The X90 range of products allow a broad range of cutting applications and will provide fast cutting characteristics combined with low wear rates and an excellent lifetime.



**PRODUCT DATA SHEET**

**KIT CONTENTS:**

Code	Description	
A10DC38	38MM DRY CORE DRILL - SLOTTED	
A10DC52	52MM DRY CORE DRILL - SLOTTED	
A10DC117	117MM DRY CORE DRILL - SLOTTED	
A10SDSADA200	SDS 200MM ADAPTOR	
A10HEXADA200	HEX 200MM ADAPTOR	
A10ATAPER175	10 X 175MM PILOT DRILL	
A10DRKEY	DRIFT KEY	
A10DCDCASE3	7PC CORE DRILL CASE	

**SUITABLE FOR USE ON:**

CORE DRILL MACHINES IN ACCORDANCE WITH MANUFACTURERS HANDBOOK



**APPLICATION:**

- Medium Soft Facing Brick
- Concrete Blocks
- Hard Sandstone
- Coarse Sandstone
- Soft Slate
- Breeze Block
- Lignacite Blocks



Brick



Soft Stone



Concrete Block

- **RECOMMENDED** to cut these materials
- **Will cut these materials** with the possibility of reduced lifetime / glazing

**PRODUCT DATA SHEET**