

R-934 [ENGLISH]: 934 HEX NUT



R-934

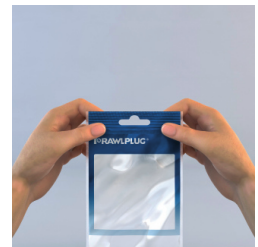
PACKAGING

FEATURES AND BENEFITS

Each packaging features two highly functional solutions: the Ziploc type re-sealable zipper and the sturdy upper packaging section. This allows for the bag to be opened and closed multiple times, provides for secure storage of products for a long time, and facilitates display by preventing the bag from folding.

Depending on the product type, and its weight in particular, the Rawlplug comes in two standard thickness versions. All this to ensure durability and strength of our packaging in transport, the highest quality of product display, and ultimately also long-lasting storage.

The bags are made entirely of low-density polyethylene, which makes them suitable for recycling and reduces the related purchase costs



A (mm)
65 X 130

B (mm)
80 X 145

C (mm)
95 X 165

D (mm)
95 X 220

E (mm)
145 X 220

F (mm)
145 X 290



PRODUCT

FEATURES AND BENEFITS

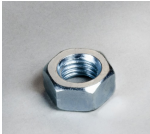
DIN 934 Hex Nut is the most widely used, used in all areas of industry, agriculture and construction.



BASE MATERIALS

APPLICATIONS

PRODUCT COMMERCIAL DATA



Product Code	Quantity		Quantity		Bar Codes
			Box	Outer	
R-S1-934-10/10	10	True	5	25	5906675439846
R-S1-934-06/20	20	True	5	25	5906675439822
R-S1-934-08/20	20	True	5	25	5906675439839
R-S1-934-12/8	8	True	5	25	5906675439815