

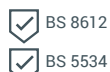
TECHNICAL DATASHEET
C01/C01N
SLATE DRY VERGE



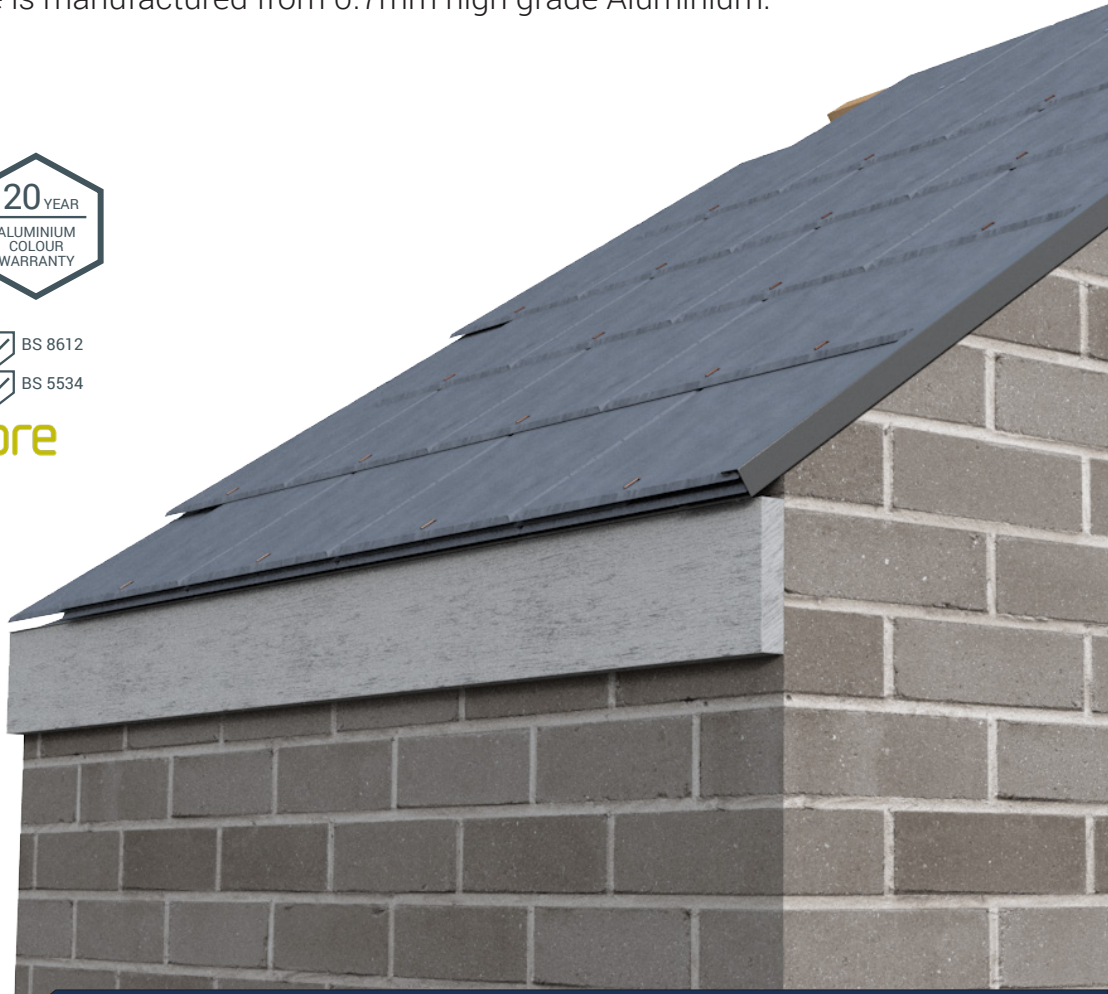
The Kytun™ Slate Dry Verge System permanently secures slate applications on gable ends protecting the verge from wind uplift and rain.

The design helps protect the edge of the roof from the elements and eliminates the possibility of lifting and damage to the roof underlay. No mortar or timber guides are required. It can be bespoke manufactured to virtually any profile to suit individual requirements.

All our bespoke dry verge is manufactured from 0.7mm high grade Aluminium.



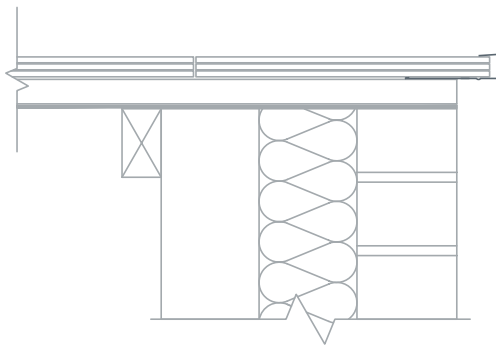
bre





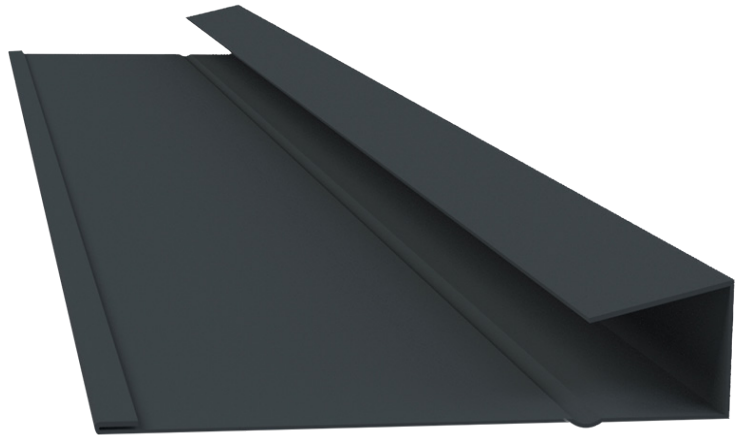
Product Details

The Kytun™ Slate Dry Verge System permanently secures slate applications on gable ends protecting the verge from wind uplift and rain. The Slate Dry verge System can be used with both interlocking slates and double lap natural or fibre cement slates. The components are manufactured from high grade pre-primed polyester coated aluminium, polyester coated galvanised steel & plastisol coated galvanised steel which produces textured finish.



Product Features

- Provides full wind uplift and rain protection.
- Patented 'Drip System' which allows for self drainage of rain water into the gutter.
- Extremely easy and quick to install.
- Requires no maintenance once installed.
- Can be fully customised.
- Extensive range of colours available.

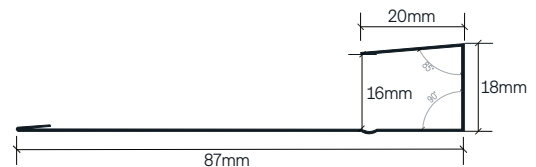


Dimensions

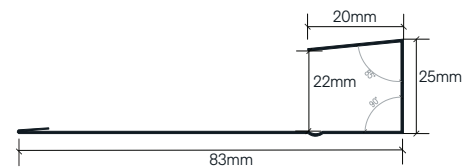
C01/1N Slate Dry Verge: Aluminium
Overall length: 3000mm

| Code | Size | Colour | Pk Qty |
|------|-----------|-----------------------|--------|
| C01 | 18mm x 3m | Blk • Blue/Blk • Brwn | 20 |
| C01N | 25mm x 3m | Blk • Blue/Blk • Brwn | 20 |

Aluminium Polyester Coated



4-5mm
Fibre Cement Slate



6-8mm
Natural Slate

